



# Earth's Layers

## *Crust of the Earth*

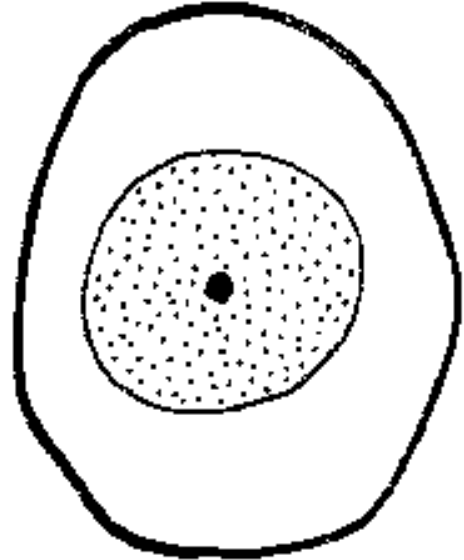
**Overview :** *Students will discover that Earth is made of layers, somewhat similar to a hard-boiled egg.*

### Materials

- Hard-boiled egg
- Permanent black marker

### Demonstration

1. Cut a hard-boiled egg in half length wise use the black marker to make a dot in the centre of the egg.
2. Explain that the Earth is somewhat like this egg, with the crust being the egg's shell, the white layer representing the mantle, the yolk representing the core and the black dot being the inner core.
3. Crack the shell to show how the Earth's crust is cracked. Tell the students that this is due to pressure of the mantle pushing upward against the crust, cracking it in some areas.
4. Tell students that the egg shell is actually too thick to represent Earth's crust. Remove the shell and colour the outside of the egg with a felt pen. This layer of colouring would represent the actual thickness of the crust in comparison to the rest of the earth.



Adapted from "Rocks and Minerals: Super Science Activities" by Ruth Young, p.13 (Hawker Brownlow)

## *Layers of the Earth Model*

### You will need:

- some chocolate icing
- a slice of Swiss roll
- a Kool Fruits sweet
- some orange jelly
- a clear, plastic cup
- a teaspoon

### What to do:

- Pour some jelly into your cup to the marker.
- Place the jelly cup into the fridge for one hour until it begins to set
- Add one Kool Fruit to the jelly cup, in the centre of the jelly.
- Put the cup back into the fridge to set completely.
- Put one slice of Swiss roll into the cup so that you can see the spirals if you look down.
- Spread the chocolate icing over the Swiss roll to cover it completely.

**Hint for teachers:** 1 jelly makes enough for 10 students.

