



SD07 A CLIMATE FOR CHANGE
Sustainable Development Conference



Mitchell H. Hooke
Chief Executive
Minerals Council of Australia

Opening Address



www.minerals.org.au/sd07

Sponsors

> Gold Sponsor



> Silver Sponsor



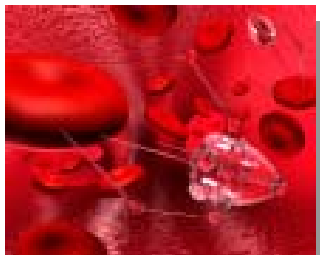


3 Waves of Change

- > 1. Threat to the industry's social licence to operate
- > 2. Commitment to sustainable development and continuous improvement
- > 3. Third wave - differentiate a company's performance in the markets



The Year is 2025....





Looking Back to 2007....





Today....

- > Globalisation is fragile - reform complacency its nemesis
- > Capacity constraints - the economic policy issue of the moment
- > Safety and health - number 1 value and commitment
 - compromised by paternalistic approach to O.H. & S.?
 - behaviour within workplaces - personal accountability
 - over-confidence in systems and processes?
 - differentiate responsibilities for, interests in, community health
- > A new platform of external stakeholder engagement
- > Imperative for regulatory reform to O.H. & S. and Project Approvals
- > Reform of State and Federal relations - 3rd wave of economic reforms



Today (Continued)....

- > Chronic challenge of rebuilding the vocational and educational training system
 - national strategic framework
 - market responsive; flexibility; competency based; mutual recognition
 - awareness; attraction; retention; institutional capacity building
 - professional capacity to implement sustainable development
 - social competencies post-graduate course
- > Fostering gender and cultural diversity in our workforces
- > Sustained economic and social development in Indigenous communities
 - greater public sector resourcing
 - human and financial
- > Industry cannot be a surrogate for Governments' responsibilities in providing social and physical infrastructure



Today (Continued)....

- > Industry's commitment to environmental management
 - in land use
 - rehabilitation and reclamation
 - ^L emissions and chemicals management
- > Competition policy
 - the export infrastructure system
 - a nationally consistent approach
 - market based solutions
 - strong alignment of direct economic interest with direct equity
- > Workplace relations - risk is reform backsliding
 - flexibility and choice
 - culture of direct employer/employee partnerships
 - full range of employment instruments



Today (Continued)....

- > New challenges:
 - efficient use and access to water
 - reconciling climate change management with energy security
 - ensuring social and economic health/wellbeing of local communities
 - capacity constraints to growth