

# > AUSTRALIAN MINERALS INDUSTRY SAFETY AND HEALTH

QUARTER  
**2**  
2004-2005

## SAFETY SURVEY REPORT

QUARTER 2

FOR 1 JULY 2004 – 31 DECEMBER 2004

### SUMMARY

- > There were four (4) fatalities recorded in the second quarter of the 2004-2005 reporting year. There was one (1) fatality in the same reporting period last year. This brings the 2004-2005 total to seven (7).
- > The indicative total industry Lost Time Injury Frequency Rate (LTIFR) for the six months to December 04 is estimated at four (4).
- > The indicative total industry Total Recordable Injury Frequency Rate (TRIFR) for the six months to December 04 is estimated at 21.

The state of mind where we are constantly aware of the possibility of injury and act accordingly at all times

Minerals Council of Australia Safety Awareness

### DESCRIPTION OF MINERALS INDUSTRY FATALITIES

(1 OCTOBER 2004 – 30 DECEMBER 2004 ONLY)

There have been four fatalities during the second quarter of the 2004-2005 reporting year.

#### South Australia Smelting/refining

18 October 2004 – Mr Greg Sleep, was working in the raw materials handling section of the sinter plant when he was fatally injured.  
ZINIFEX

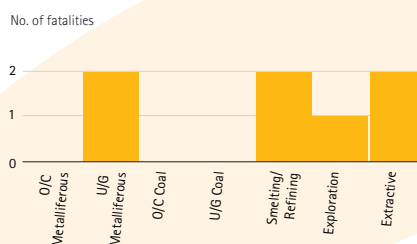
his brother. It appears that he had travelled up the small shaft at the site in a kibble and reached the surface. While attempting to dismount from the kibble, he fell some 7-10 metres down the shaft. His brother went to his aid and assisted him to the surface and then drove him to the local regional hospital. He was said to be passing in and out of consciousness during the journey. On reaching the hospital, he lapsed into a coma from which he did not recover.

WA STATE MINING ENGINEER

#### Queensland Extractives

22 October 2004 – Kerry Ann McDonald, a female visitor to a small open cut gypsum mine site 150 km south west of Winton was fatally injured when run over by a front end loader. The loader operator had completed loading one side of his truck and when he reversed round the truck to load the other side he noticed the visitor lying injured on the ground.  
QLD NRM

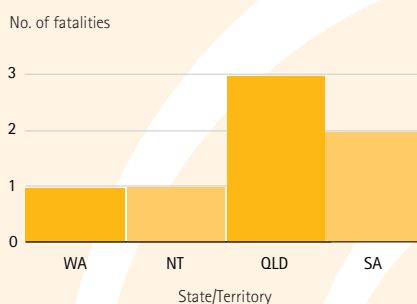
Fatalities by Sector 1 July 2004 – 31 December 2004



#### Exploration

24 November 2004 – Mr Barry Cusack, a driller, received fatal injuries when he and his air-trac drill fell over the face at a small open cut copper mine near Cloncurry. The driller was working on a bench drilling ground support and blast holes when he and the drill rig went over the edge of the bench and fell about 21 metres to the bottom of the open cut. The driller received extensive head and leg injuries from which he died.  
QLD NRM

2004-2005 Fatalities by State



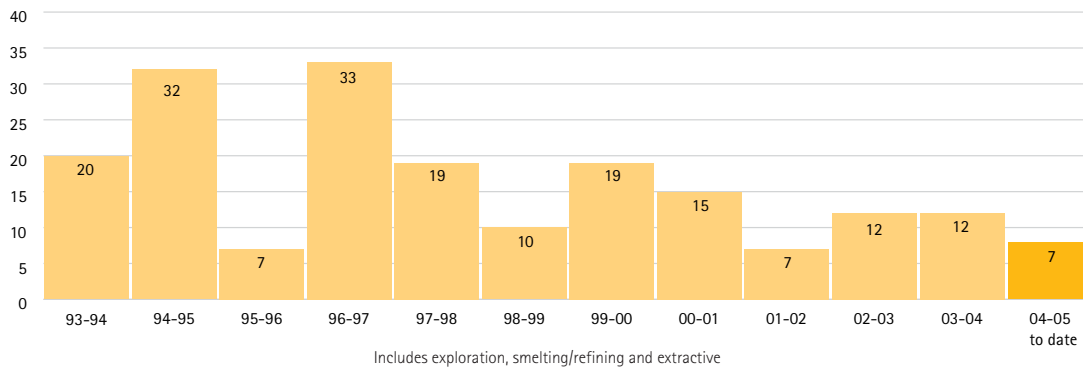
#### Western Australia U/G Metalliferous

24 October 2004 – Mr William Brown Duncan, a 57-year-old prospector, was involved in an accident on a small mine that he was working with



**Fatalities 1993-94 to 31 December 2004**

No. of fatalities



**INJURIES AND FREQUENCY RATES**

**Lost Time Injuries**

The indicative total industry Lost Time Injury Frequency Rate (LTIFR) for the first half of the 2004-2005 reporting year is estimated at four (4).

**Medical Treatment Injuries**

For the second quarter of the 2004-2005 reporting year, survey responses show a total of 377 Medical Treatment Injuries (467 - Q1).

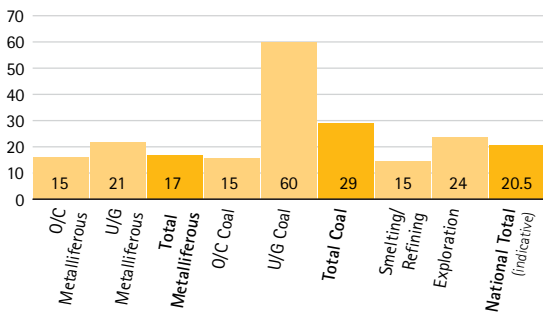
**Total Recordable Injuries**

The industry is working in a voluntary and proactive way to improve safety and health performance by reporting broader outcomes measures and in particular Total Recordable Injuries (TRIs) which include all injuries except first aid cases. Jurisdictions are encouraged to adopt this measure.

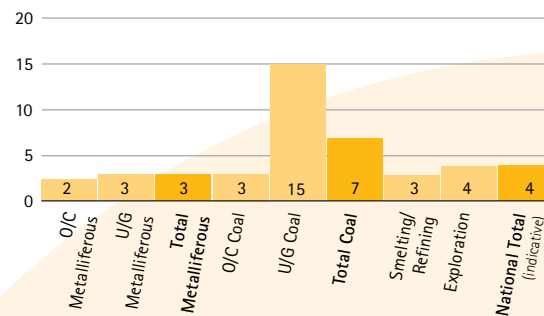
A total of 804 TRIs have been reported this quarter (974 - Q1). This equates to an indicative TRIFR of 20.

Companies and sites may like to compare their TRIFR with this minerals industry indicative figure.

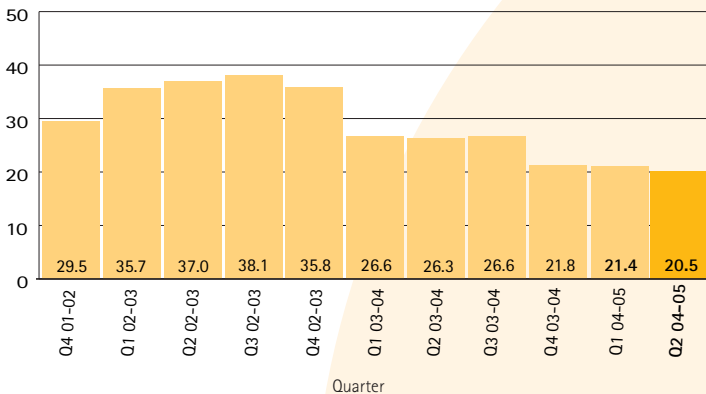
**TRIFR by Sector 1 July 2004 - 31 December 2004**



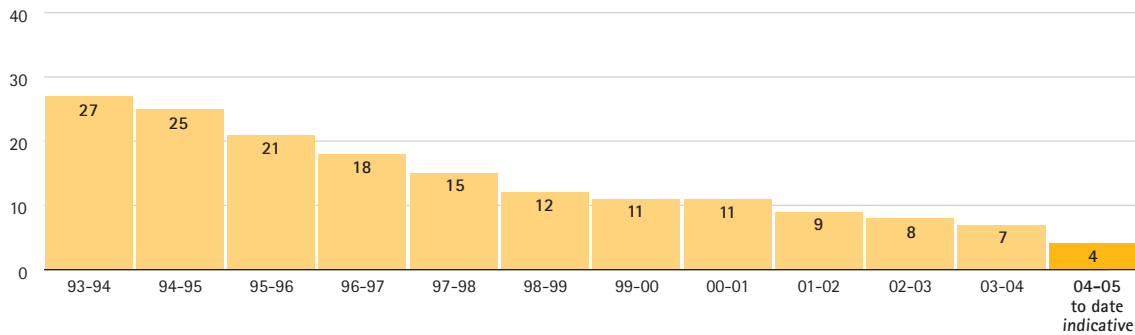
**LTIFR by sector 1 July 2004 - 31 December 2004**



**Total Recordable Injury Frequency Rate (TRIFR)**

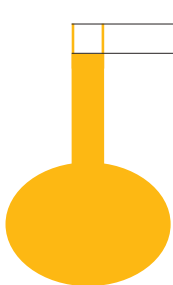


## Total Lost Time Injury Frequency Rate 1993-94 - 31 December 2004



## METHODOLOGY OF QUARTERLY SURVEY

### Report coverage based on exposure hours



Industry averaged 225 million hours for the reporting year (2003-04 data).

This Report's responses total 86.5 million hours for year.\*

\* When the exposure hours for this reporting year (2004-05) are compared with official industry exposure hours for 2003-04, an indicative figure of 77% coverage in this Report is calculated. However, this figure may overestimate the Report's coverage.

The MCA acknowledges the limitations of the survey methodology, data consistency and reporting timeframe. Readers should note this Report is indicative only.

#### Minerals Council of Australia

Tel: 02 6233 0600 (switchboard)

Fax: 02 6233 0699

Email: [info@minerals.org.au](mailto:info@minerals.org.au)

Website: [www.minerals.org.au](http://www.minerals.org.au)

This document can be found on the MCA Website

**Note to readers:** if you would like future issues of this quarterly document emailed directly to you (as a PDF document), please contact the Minerals Council of Australia on 02 6233 0644, fax 02 6233 0699 or by email [info@minerals.org.au](mailto:info@minerals.org.au)

The MCA would like to thank all reporting companies, Coal Services and the Australian Aluminium Council who supplied information for this Report.

The MCA is aware that, for some fatalities, the circumstances at the time of the incident are unclear, including whether it is a workplace-related fatality. In these cases, the MCA is guided by the approach taken by the relevant State/Territory authority. Any revisions in fatalities will be included in future Reports as appropriate.

This document can be found on the web at:

[www.minerals.org.au/safety](http://www.minerals.org.au/safety)

**NB:** From 1 July 2003, BHP Billiton changed their injury/illness definitions. This affects all BHP Billiton reporting data in this Report.

**Lost Time Case -** A Lost Time Case is a work-related injury or illness resulting in the employee/contractor being unable to attend work on the next calendar day after the day of the injury.

If a suitably qualified medical professional advises that the injured person is unable to attend work on the next calendar day after the injury, regardless of the injured person's next rostered shift, a lost time injury is deemed to have occurred.

**Restricted Work Case -** A Restricted Work Case is a work related injury or illness which results in the employee being unable to perform one or more of their routine functions, or from working the full day on or after the next calendar day after the injury/illness. An injury is not regarded as a restricted work injury when the medically imposed restrictions limit activities other than their routine functions.

**Routine Functions -** The work activities that the employee regularly performs at least once per week.